



SABERO (E.A) LIMITED

Company Profile

About Us

WHO ARE WE?

SABERO (E.A) LIMITED is one of the leading earthmoving and underground utility contractors in Kenya.

Through the years, SABERO E.A. LIMITED has been recognized as a leading contractor by both the public and private sectors. One of the keys to this success is the ability to provide our customers a complete site development package including mass grading, underground utilities and paving.

By staying ahead of technology and continually education our employees, we provide the safest and most cost effective site solution to any project.

SABERO (E.A) LIMITED works as a sole company in most projects, however, at times SABERO (E.A) LIMITED enters into a Joint Venture Partnership with other contractors as needed depending on the Project Scope.



Our Vision

OUR PHILOSOPHY

- We promote a team environment and partner with the client to maximise the benefits of shared skills and resources.
- It is important that the client understands and recognises the benefits that can arise from using a dedicated equipment company.
- We base our business on customer service by treating others the way we would like to be treated. We know that customer satisfaction is the only way to maintain success.
- By knowing the needs of our customers and through our highly trained, safe and mobile work force, SABERO (E.A) LIMITED will be the number one solution provider in the heavy equipment industry.

MISSION STATEMENT

- To Provide our customers with exceptional service, quality equipment for rental & Supplies for both contractors and home owners alike.

VISION STATEMENT

- To be the number one Construction Heavy Equipment and Solutions Provider to our customers.



Our Values

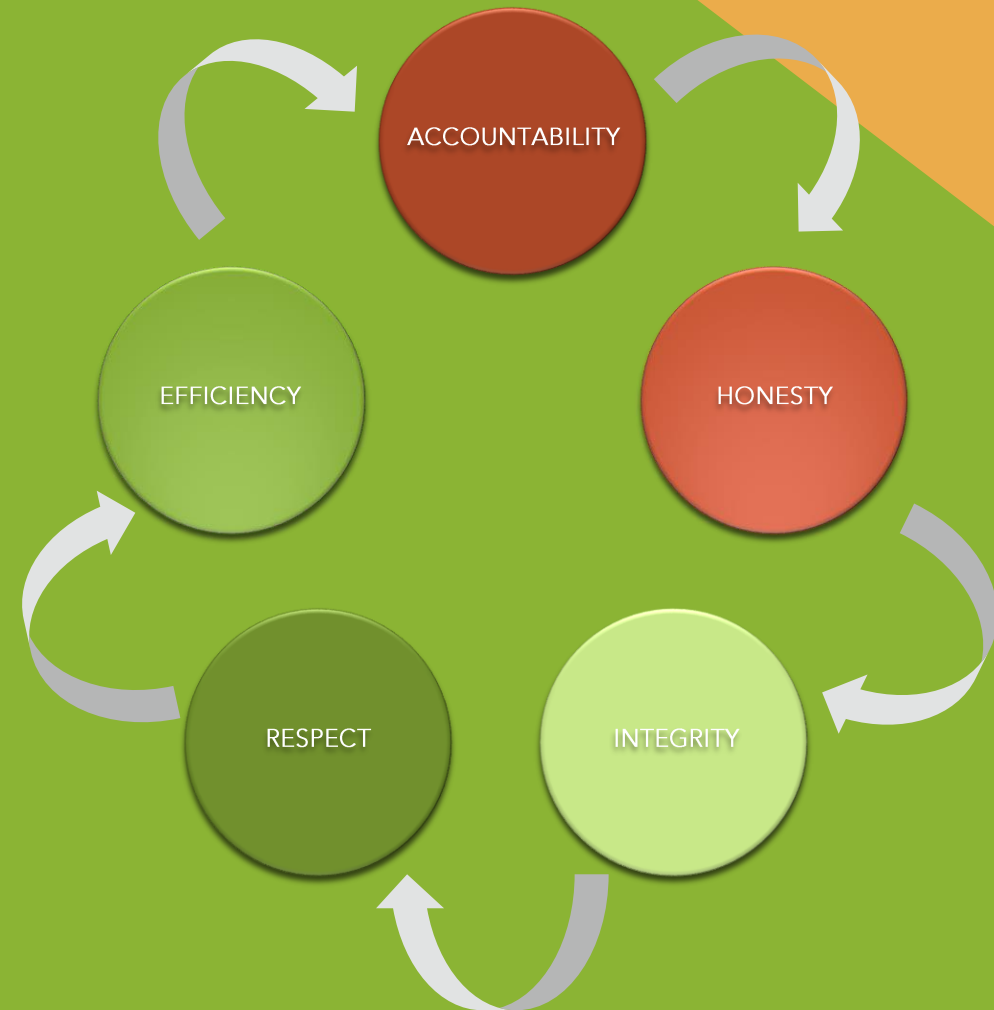
TRUTHFULNESS – We believe in uncompromised honesty and integrity with employees, customers and suppliers.

RESPECT – We respect the beliefs and opinions of all people. We encourage our employees to always perform to the best of their abilities, meeting the expectations of our customers and our company.

ATTITUDE – We maintain an optimism and remain dedicated to carry out our business according to our values.

INTEGRITY – At SABERO (E.A) LIMITED we pride ourselves in Doing what we say and what we promise.

COMMUNITY – we support the causes of our employees believe in and the communities alike and work in.





Our Services

How Can We Be of Service To You?

Our Promise

How Can We Be of Service To You?

At SABERO (E.A) LIMITED our Primary services are:

1. Earth Moving and Grading
2. Underground Utility Installation
3. Highway Construction

Sectors

Our Clientele

SABERO (E.A) LIMITED offers the best solution when it comes to Construction Equipment to a varied of sectors in construction industry. These include both Public and Private-Sector projects.

Typical private-sector projects include:

1. Residential Developments.
2. Hospitals.
3. Restaurants.
4. Office complexes.
5. Shopping centres.
6. Industrial buildings.

In the public sector, the projects include:

1. Construction of highways.
2. Waste-water Treatment Facilities,
3. Water Diversion Infrastructures.



Our Equipment List

Machinery and Equipment

At SABERO (E.A) LIMITED we pride ourselves in the ability to deliver the right machine to every project site in our portfolio. We ensure that our machines are regularly serviced in order to ensure we give our clients safe machines. Our fleet includes the following equipment:

In addition to our fleet of heavy equipment, SABERO (E.A) LIMITED maintains a company truck fleet of Lowboy trucks. This is leading to ensure that all our materials and equipment are delivered on site on time regardless of the circumstances.

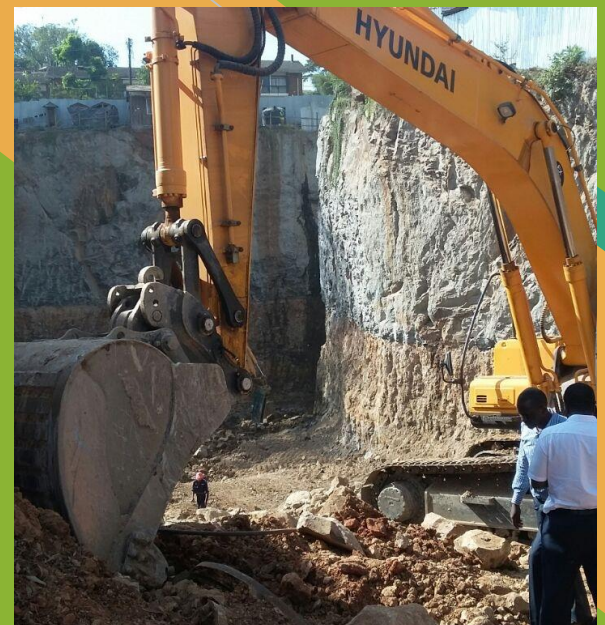
| | Equipment & Machinery |
|----|--------------------------|
| 1. | Bulldozers |
| 2. | Backhoe Loaders |
| 3. | Wheel Loaders |
| 4. | High Capacity Excavators |
| 5. | Track Loaders |
| 6. | CAT D6 Dozers |
| 7. | Motor Graders |

Equipment & Machinery









Quality Philosophy

SABERO (E.A) LIMITED is commitment and dedication to quality control is of the utmost standard. It is in our culture. Our systems at all levels are comprehensive and enforced.

We see quality as a “team exercise” from correct the management to the work force. We provide the best quality equipment with high levels of safety.

Our philosophy is to offer high-quality products and customer service, with dependable support.



HSEC Management

It is the intent of SABERO (E.A) LIMITED to provide a safe work environment for all our workers and the wellness of our people, families and communities. We embrace healthy habits and behaviors. This also includes maintenance of all our equipment regularly to ensure that they are in top condition before being taken to site.

It is also our intent to properly manage any incidents that occur so as to minimize injury and other forms of loss. A well managed workplace safety program can benefit our company in countless ways.

In order for SABERO (E.A) LIMITED to achieve our goals, we have developed a safety program outlining our policies and procedures regarding employee health and safety. Each and every individual must become familiar with the program, follow and enforce the procedures, and become an active participant in this workplace safety program.

While management will be responsible for developing and organizing this program, its success will depend on the involvement of each and every employee.

Our Projects



Project Portfolio

STANDARD GAUGE RAILWAY (VOI – MARIAKANI)

Standard Gauge Railway (SGR) – Subcontracted by CRBC. Section from Voi to Mariakani in 2015.

Kenya Railways Corporation is developing a new standard gauge railway (SGR) line for passengers and cargo transportation between Mombasa, the largest port in East Africa, and Nairobi, the capital of Kenya.

The SGR project is proposed to connect Mombasa to Malaba on the border with Uganda and continue onward to Kampala, Uganda's capital city. It will further run to Kigali in Rwanda with a branch line to Juba in South Sudan. Branch lines along the route will extend to Kisumu, Kasese and Pakwach.

The new railway line constitutes the first phase of the SGR project that aims to connect Kenya, Uganda, Rwanda and South Sudan.

The Mombasa-Nairobi SGR is the biggest infrastructure project in Kenya since independence. It will shorten the passenger travel time from Mombasa to Nairobi from more than ten hours to a little more than four hours. Freight trains will complete the journey in less than eight hours.



Project Portfolio

STANDARD GAUGE RAILWAY (SYOKIMAU - NAIROBI)

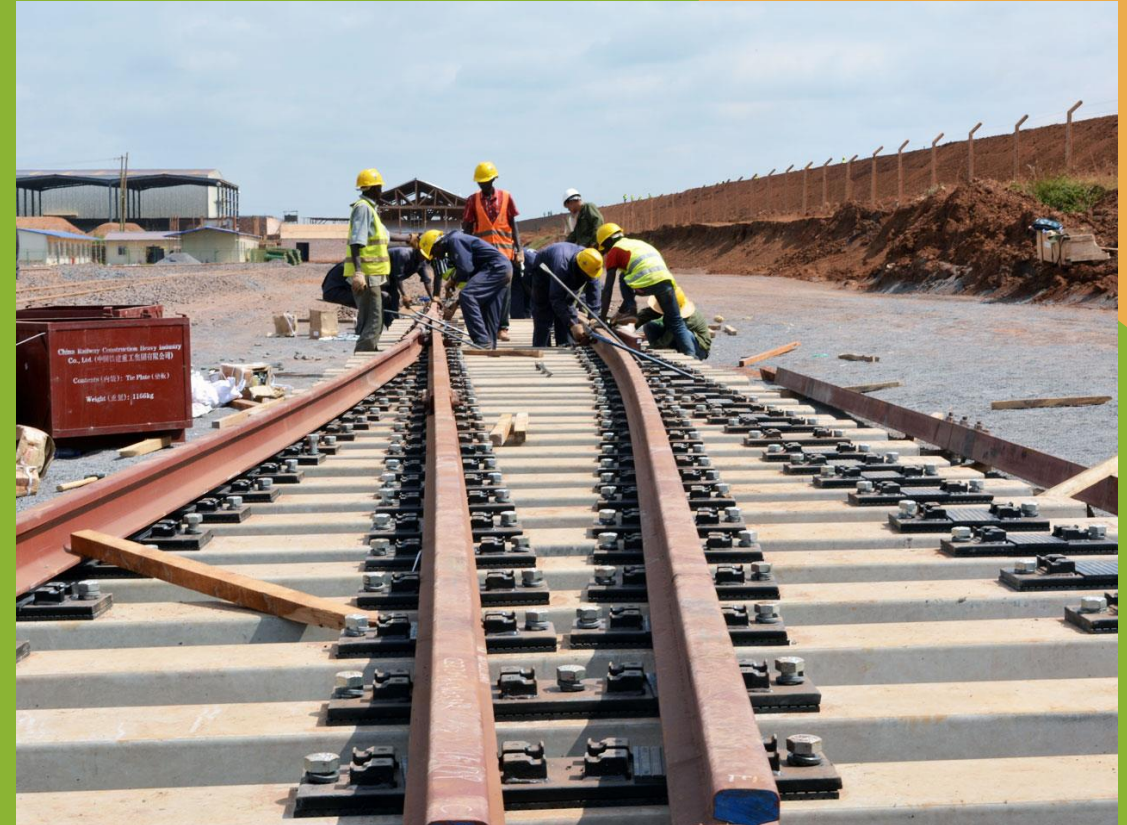
Standard Gauge Railway (SGR) – Subcontracted by CRBC. Section 8 Syokimau to Nairobi in 2016.

Kenya Railways Corporation is developing a new standard gauge railway (SGR) line for passengers and cargo transportation between Mombasa, the largest port in East Africa, and Nairobi, the capital city of Kenya.

The SGR project is proposed to connect Mombasa to Malaba on the border with Uganda and continue onward to Kampala, Uganda's capital city. It will further run to Kigali in Rwanda with a branch line to Juba in South Sudan. Branch lines along the route will extend to Kisumu, Kasese and Pakwach.

The new railway line constitutes the first phase of the SGR project that aims to connect Kenya, Uganda, Rwanda and South Sudan.

The Mombasa-Nairobi SGR is the biggest infrastructure project in Kenya since independence. It will shorten the passenger travel time from Mombasa to Nairobi from more than ten hours to a little more than four hours. Freight trains will complete the journey in less than eight hours.



Project Portfolio

CHINA WUYI ROAD CONSTRUCTION

China Wuyi – Road Construction Kenol, tala, Kangundo road June 2016

Construction Of Kangundo Road (tala)-Kenol, Kenol-Kangundo Road (Koma) And Katumani – Mombasa Road And Rehabilitation Of Kenol – Machakos Town – Katumani Link Road



Project Portfolio

SAFARICOM FOUNDATION ACADEMY

*CRJE (E.A) Limited – M-Pesa Foundation School Construction
Thika November 2016*

The secondary school, dubbed M-Pesa Academy, will be built on a 50-acre piece of land in Thika. The M-Pesa Academy will be built and owned by the M-Pesa Foundation, a charity organisation established by Safaricom in 2010.

Besides classrooms and accommodation blocks, the school will also have a conference facility. The academy will provide education to brilliant but academically challenged students; the school will offer the KCSE curriculum.

In addition to academic facilities, the school will include an indoor sports hall, a sports field, running track, swimming pools, squash courts, a music centre and a 500 seats auditorium.



Project Portfolio

KAREN WATER FRONT MALL

CRJE (E.A) Limited – Karen Water Front Mall September 2016

Karen Waterfront, located within the Karen Triangle, will include 25,000 square metres of retail space organized around an 8-acre lake which is encircled by a landscaped boulevard as well as by extensive high-end residential apartments and offices.

The waterfront is planned as a village to work, live and play; a place where one can walk in the street in a secure and well-planned urbanism.

The Karen Triangle, which is defined by the Karen, Ngong' and Lang'ata Roads, is a zone ear-marked for mixed-use development, within the greater Karen Area, which is mostly zoned for residential development.

The design inspiration for the development is "Urban Savannah". For PLANNING, this means respecting the landscape of Karen, and more-so, celebrating it. The Karen Waterfront is poised to set a precedent for Sustainable Development within the Karen Landscape.



Project Portfolio

XIHNUA NEWS AGENCY

Xihnua News Agency – January 2017

The Xihnua News Agency development project is located in Kilimani Nairobi.

We were sub-contracted by CRJE East Africa to carry out the excavation works.



Project Portfolio

DAYSTAR UNIVERSITY ATHIRIVER DAM EXCAVATION

Daystar Athi River Dam – April 2017

Daystar University had commissioned a dam at its Athi River Campus, whose estimated cost was be 110 million shillings.

The dam, was expected to supply water throughout the year, some of which would be given to the community at a small fee. The fee was expected to help offset maintenance costs, and also curb misuse.

We were contracted to carry out the excavation works.



Project Portfolio

MAJANI PLAZA KOINANGE STREET – NAIROBI KENYA

Majani Plaza Building– July 2017

Majani Plaza is a proposed office block building on Koinange Street in Nairobi CBD.

We were contracted to carry out the demolition and excavation works.



Project Portfolio

SAFARICOM FOUNDATION ACADEMY

*CRJE (E.A) Limited – M-Pesa Foundation School Construction Thika
September 2017*

The secondary school, dubbed M-Pesa Academy, will be built on a 50-acre piece of land in Thika. The M-Pesa Academy will be built and owned by the M-Pesa Foundation, a charity organisation established by Safaricom in 2010.

We were sub-contracted by CRJE East Africa Limited to carry out the excavation of Dormitories, Director's House, Crèche House and the Student Centre.



Project Portfolio

ROAD CULVERTS AND DRAINAGE – KAPLONG, BOMET, KENYA

Road Culvert & Drainage – October 2017

This is a project in Kaplong, Bomet county.

We were contracted by China Wu Yi Company Limited to construct the road access Culverts and drainages. This is for the Kaplong – Soimet – Kapletundo Road in Bomet County.



Project Portfolio

THE RIDGE MIXED-USE DEVELOPMENT BY CYTONN - 2018

The Ridge is a comprehensive and luxurious mixed-use development located in Ridgeways, Nairobi approximately 10 km from the CBD, 300m from the junction of Kiambu Rd and the Northern Bypass.

5 minutes' drive from the Two Rivers Mall, the biggest shopping mall in East Africa, less than 5 minutes' to Windsor Golf Club and 10 minutes' from UNEP headquarters in Gigiri.

The Ridge, which sits on 9.9 acres of land and touches the Northern Bypass, was inspired by the need for a work-play environment that aims at bringing together people from different walks of life to share a luxurious and convenient lifestyle. The development comprises of residential and commercial spaces.



Project Portfolio

Fivestar paradise by Ams properties

Five Star Paradise Runda is tucked away in spectacular scenery on the fringes of Nairobi City next to Paradise Lost, off Kiambu Road.

This is an iconic development designed for absolute luxury and comfort, allowing you and your family to enjoy a truly exclusive countryside living experience with all the amenities, as well as facilities, of a lush and modern gated community.

It consists of 179 exquisite 3-, 4-, & 5- bedroom luxury villas and 80 3-, 4- bedroom duplexes on a 40-acre site with serene rolling hills and panoramic views.

At Five Star Paradise's strategic and tranquil location, one will continue to relish a city life whilst at the same time enjoying the pleasures of countryside living amidst the green expanses, misty hills and scenery of Kiambu area.



Project Portfolio

Excavation at VPs new home in koilel farm august 2017

We were contracted to carry out the excavation works for the New Vice President's home in Koilel Farm.





Contact Us.

Sabero (E.A) Limited

D&D Building 6th Floor Nakuru

P.O. BOX 10161 – 20100 NAKURU, KENYA

+254 710 250 531/ +254 707 182 300

sabero.limited@gmail.com

www.saberoealimited.org

